

Public Engagement at Queen Mary

Rose de Lara, Public Engagement Manager
Centre for Public Engagement

Centre For Public Engagement (CPE) Team



**Alex Mehta
Brown**
Public
Engagement
Lead



Ife Akinroyeje
Community
Engagement
Manager



Rose de Lara
Public
Engagement
Manager



Aoife Sadler
Participatory
Research Officer



Rachel Wornell
Strategic
Engagement
Officer

Engage Platinum watermark holders - NCCPE



"Seen to be leaders in the field, the institution is advancing the practice of engagement, its evaluation and impact, and challenges and inspires other institutions to value engagement as a critical part of their work." - NCCPE



What is public engagement?

What is public engagement?

“Public engagement describes the myriad of ways in which the activity and benefits of higher education and research can be shared with the public. Engagement is by definition a **two-way process**, involving interaction and listening, with the goal of generating **mutual benefit**.”

- The National Co-ordinating Centre for Public Engagement

Why do public engagement?

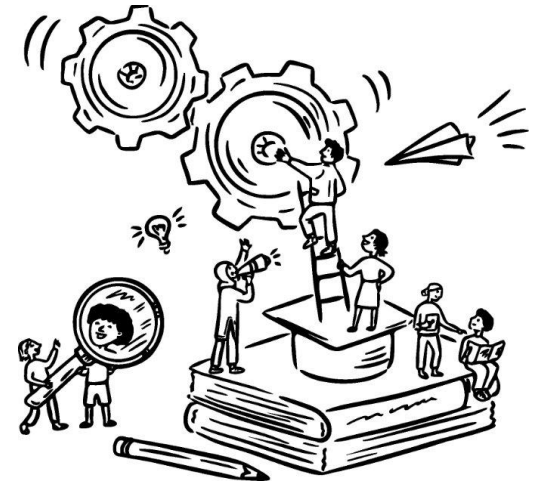
- **Social** and **civic responsibility**
- **Accountability and transparency**
- Building **trust**
- **Relevance** – responding to social needs
- To get **expertise** from outside of academia
- **Breaking down barriers** between academia and society
- Pathway to **impact** (change or benefit to society, economy or culture)
- Increasingly important to **funding** councils (for the reasons above)...



[Making the case: arguments for engaging with the public | NCCPE](#)

At Queen Mary this means...

- Public engagement with research, teaching or the core business of the university
- Public and patient involvement (PPI)
- Participatory and co-produced research
- Community engagement
- Civic engagement



Purpose and methods

Some purposes of engagement:

- Sharing what we do (inspiring, informing)
- Responding (to societal needs/ requests)
- Creating or applying knowledge together/ Doing research together (collaborating, innovating)
- Learning from others (consulting)
- Changing attitudes/behaviours

Some methods/formats:

- Hands-on activities and workshops
- Events including exhibitions, performances, screenings etc.
- Collaborative research
- Consultations
- Engaged teaching
- Advisory groups
- Whatever works best with the specific public

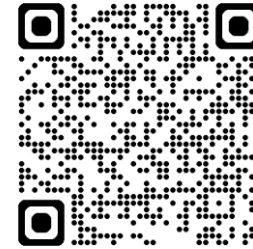
Centre for Public Engagement

Centre For Public Engagement (CPE)

What we do...

- **Advice, support and consultation** – Fortnightly 1-1 advice surgeries and support sessions with our team.
- **Funding opportunities** – Internal (Large Grants, Small Grants and Participatory Research Fund) and external
- **Training** – training for staff and students to develop their skills in public engagement
- **Programming** – coordinating participation in local public events

Find out more on the QMUL website:
qmul.ac.uk/publicengagement/



Email: publicengagement@qmul.ac.uk
Twitter: [@EngageQM](https://twitter.com/EngageQM)
Bluesky: [@engageqm.bsky.social](https://bsky.app/profile/engageqm.bsky.social)
LinkedIn: [QMUL Centre for Public Engagement](https://www.linkedin.com/company/qmul-centre-for-public-engagement)

Upcoming Public Engagement Training

- **Introduction to Public Engagement**
Thursday 12th February (in person) and Friday 10th April (online)
- **Introduction to Community Engagement**
Upcoming dates TBC!
- **Evaluating Public Engagement**
Thursday 24th February (in person) and Thursday 7th May (online)
- **Building Equitable Partnerships**
Upcoming dates TBC!

Plus more training on participatory research data analysis and participatory research with young people to be announced soon!

Small Grants funding programme

- Offers grants up to **£1,000**
- 3 x rounds a year. 2025-26 deadlines: final deadline for 2026 is 4th March
- **Flexible funding** to support small-scale public engagement, community engagement and PPI activities including events, workshops and performances, public engagement at festivals, consultation and collaboration with community organisations and groups, PPIE activities (e.g. patient panels, focus groups, advisory groups etc.)
- A **non-academic audience** is the main focus of the activity: this means students or academic colleagues should not be the primary beneficiary of the activity
- Activities must demonstrate **two-way engagement** and **mutual benefit**

Recent funded projects led by PhD students

- An **oral history** project working with young people in Havering (Large Grant)
- A **participatory research project on cultural rights** working with young adults in Rio de Janeiro (Participatory Research Fund Grant)
- **Community led art exhibition** showcasing patient and public involvement (Small Grant)
- A series of bi-lingual **embroidery workshops**, exploring how Latin American communities in London engage with nature (Small Grant)

We want to hear from you!

- Discuss your public engagement plans with us (book an advice surgery)
- Let us know if you are planning an event or project for a public audience
- Let us know if you have suggestions for training sessions
- Let us know if you are applying for external funding for public engagement
- Participate in public engagement opportunities
- Sign up to our Introduction to Public Engagement training session

Contact us at: publicengagement@qmul.ac.uk



Sign up to our newsletter to be notified of Public Engagement news and opportunities: [CPE newsletter sign up form](#)