

Library Services



Composite image of Mile End, Whitechapel and West Smithfield Libraries

Library Services is:

Libraries and study spaces

Physical and digital collections

Archives, rare books and manuscripts, and special collections

Academic Skills Centre

Exhibitions and Civic engagement events

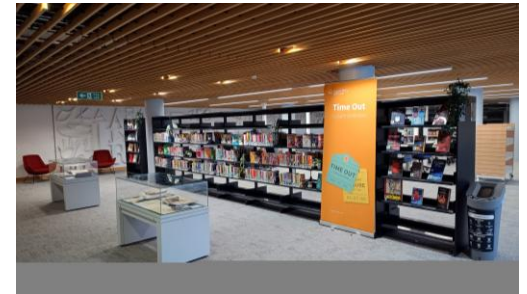
Centre for Digital Collections

Publishing and research outcomes

Research projects



Badge making at History Day, Senate House



Refurbished South Reading Room, Ground Floor, Mile End Library

Academic Skills Centre

The Academic Skills Centre provides advice and guidance through one-to-one tutorials, workshops and online resources.

Part of the Researcher Development programme, the team provide sessions on:

- Planning and carrying out a literature search
- How to identify the best resources for your research
- Effective use of reference management tools
- And the popular: "Visualise it!" - a practical hands-on session covering the process of research using visual materials.

Exhibition: 'Only Women': Botany at Queen Mary before 1939

An exhibition of Queen Mary's Archives and Special Collections.

From the history of plant science teaching, through gender inequalities, and science and colonialism.



Photograph of Ellen Delf Smith and her students, 1914

Centre for Digital Collections

Funded through Research Capital Infrastructure Fund (RCIF), the centre includes:

- Digitisation and digital transfer studio
- Hybrid in person and online exhibitions
- Asset management and preservation
- Discovery and access, and engagement events

Look out for a launch event in early 2026.



The digitisation studio, Mile End Library

Publishing and research outcomes

Open access and research sharing

Research data and FAIR principles

Research outcomes and assessment: DORA, CoARA, UKRN OR4 project



Acronyms

FAIR data principles – Findable, Accessible, Interoperable, Reproducible

DORA/SF DORA - San Francisco Declaration on Research Assessment

CoARA - Coalition for Advancing Research Assessment

UKRN OR4 – UK Reproducibility Network Open and Responsible Researcher
Reward and Recognition project

ENACT: National Practice Research Data Service

- Led by University of Westminster, with academic and professional services Co-Is at Queen Mary and University of Leeds, and a technical partner (tender in progress)
- Queen Mary Co-Investigators: Helen Bailey (VP International) and Sarah Molloy (Head of Library Research Support)
- Arts and Humanities Research Council (AHRC)-funded
- Understand the requirement for the description, storage, access and sharing of practice and/or multi-component research outputs, and the repository architecture and infrastructure required to support them
- Undertake pathfinder projects to develop and implement Enact: Core
- (Potential) follow on funding to develop and implement Enact: Enhanced and scale into a national data service

Keeping in touch

- WebChat: <https://qmul.libanswers.com/>

Website: <https://qmul.ac.uk/library>

Email: library@qmul.ac.uk

Thank you



Queen Mary
University of London