

Public Art Scope

QMUL, SBM project

27/06/26

1.0 Background and context

The new SBM project incorporates a significant investment in new landscape and public realm at the Mile End Campus. Planning condition 19 (landscaping details) requires details to be provided and approved in writing prior to commencement of superstructure of the following:

'i. public art locations, fixings and materials including surface finishes and colours'

The scope outlined below is the result of a review process with QMUL and the design team that concluded with a preferred option that has been agreed by the QMUL project board.

2.0 Proposed scope

The proposal is to integrate artwork within the cycle hub /shelter outbuilding which includes for a long perforated metal screen wall on the southern side of the cycle hub. The perforated metal screen is to one side of the enclosure only (the South side) with an additional weldmesh security screen behind it and to the other four sides of the enclosure.

The landscape design has been developed to date by LUC and detailed information has been submitted to London Borough of Tower Hamlets which may need to be updated and revised to accommodate the art proposals and any planting in front of the screen finessed to ensure that the artwork is suitably visible.

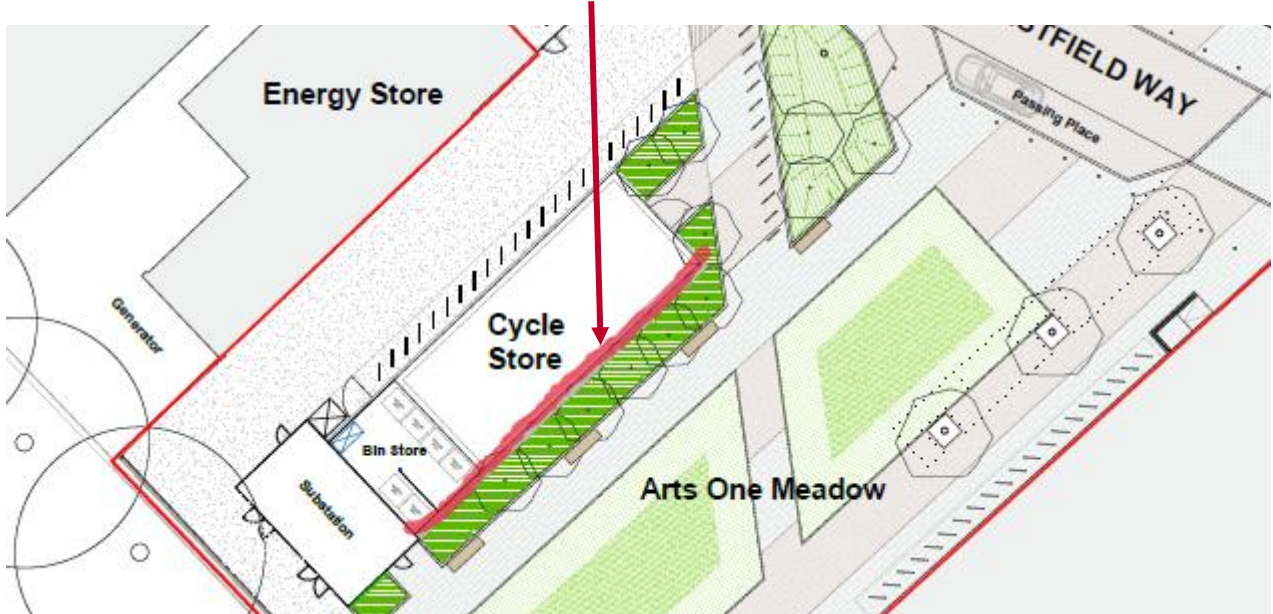
The screen within the context of the project proposals is illustrated in the view below (in red).



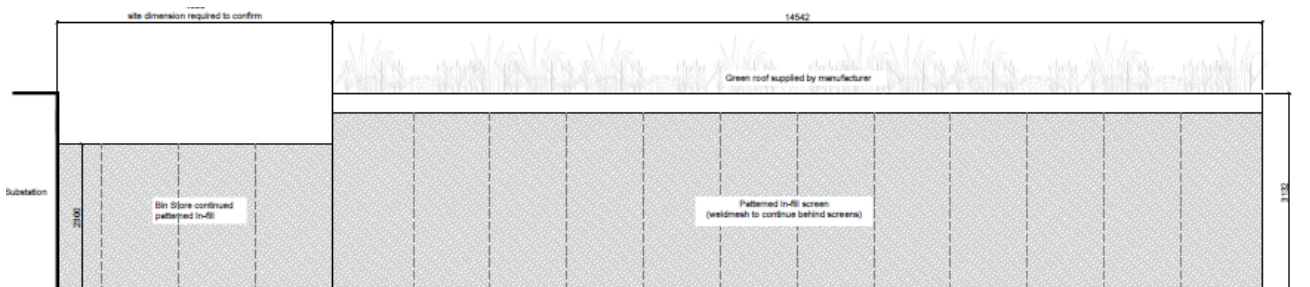
The perforated mesh screen is also illustrated indicatively in pink on the view below (early design stage image). The finish specified by LUC is powder coated galvanised steel. The colour is to be agreed as part of the artist's proposals. For context, note that the project includes for a bronze anodised effect PPC colour to the SBM building and the new entrance gates.



The scope of the screen is indicated in red on the landscape GA plan (full drawing is appended).

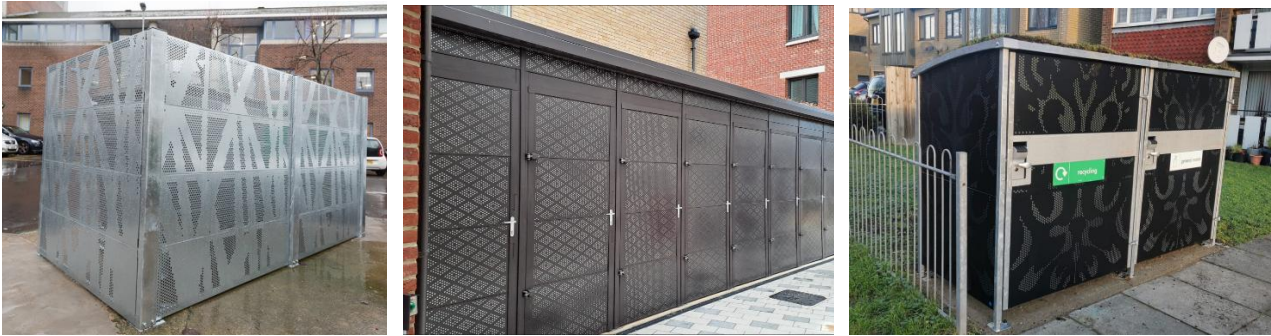


This screen is comprised of two parts – one section that is in front of the cycle shelter (2.8m high) and another section that forms the edge of the bin enclosure (2.3m high). An extract of the landscape detail drawing for the cycle hub is below (full drawing is appended).



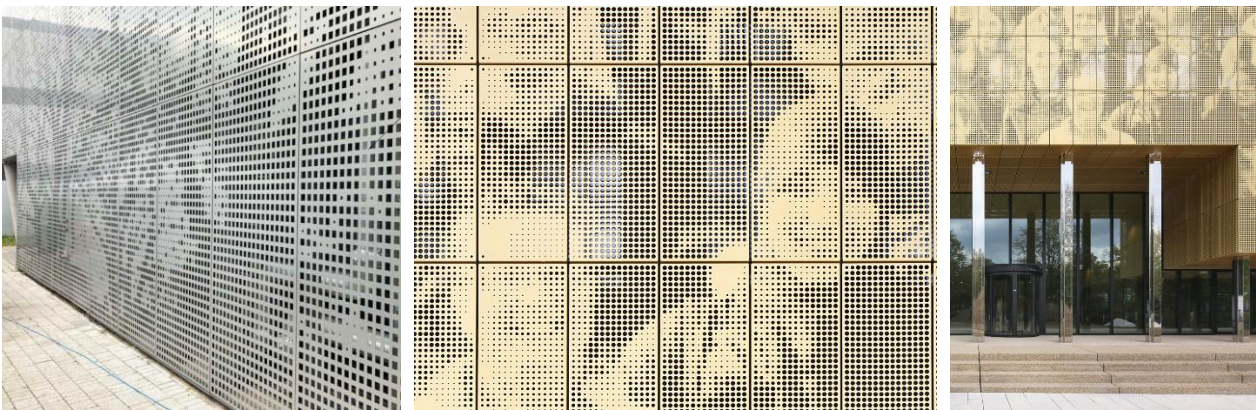
The main contractor has selected the supplier for the cycle hub (Urbanspec) and the proposal is that the artwork is realised by Urbanspec who utilise 1.1mm galvanised steel sheet and with perforation holes no smaller than 10mm.

Past project examples provided by Urbanspec are included below:



The panel arrangement should avoid visible fixings and use as large sheets as possible to minimise joints especially horizontal joints. A relevant precedent is the screening to the Graduate Centre energy hub (image included in the LUC cycle hub drawing appended separately and extract below). Another relevant precedent is the cladding to Building 0 at Antwerp University (also illustrated below).

Whilst double layering with perforated and solid sheet is possible, the design intent was for visibility from inside to out through the mesh screen.



QMUL energy centre

Building 0, Antwerp University – Perry Roberts (artist)

3.0 Artist's input

The intention is to engage and procure an artist who can propose and develop proposals for integration within the screen that could be:

- relevant to the site and its history
- or to the QMUL and its history and community
- will stand the test of time
- capture staff, student's and visitor's imagination and be thought provoking
- contribute to the quality and enjoyment of the new public realm
- create a landmark reference point on the campus

Working with the design team (landscape architect and Architect), the contractor and QMUL.

Appendix

Supplementary drawings

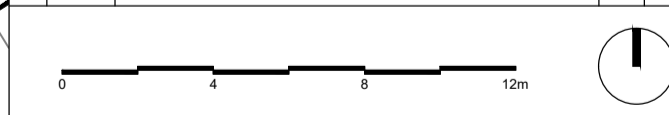


For more detailed information refer to:

- Refer to 00200 series for Hardworks
- Refer to 00400 series for Softworks

Notes
 Do not scale from this drawing.
 All dimensions are drawn in millimetres.
 Drawing & design copyright LUC.
 Reproduction of this drawing in whole or in part is prohibited without prior permission.

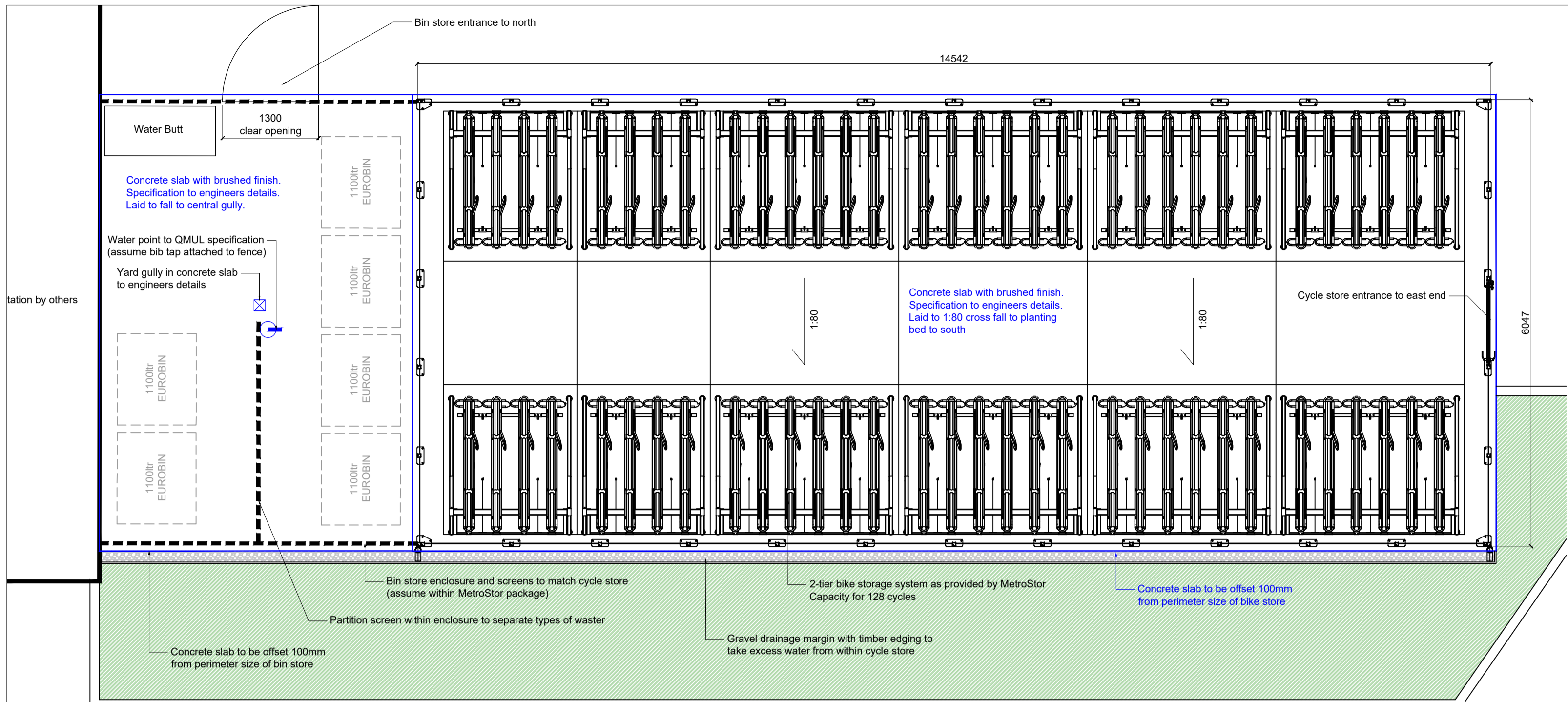
Iss	Date	Description	Des	CHK
P07	22.01.25	Planning condition issue	JL	AM
P06	03.09.24	Enabling works issue - refer to Hardworks for revisions	JL	AM
P05	18.08.24	Stage 4b issue - refer to Hardworks for revisions	JL	AM
P04	19.03.24	Stage 4b issue - refer to Hardworks for revisions	JL	AM
P03	01.03.24	Stage 4b issue - refer to Hardworks for revisions	JL	AM
P02	08.12.23	Stage 4b VE issue	JL	AM
P01	01.09.23	Stage 4b issue	JL	AM



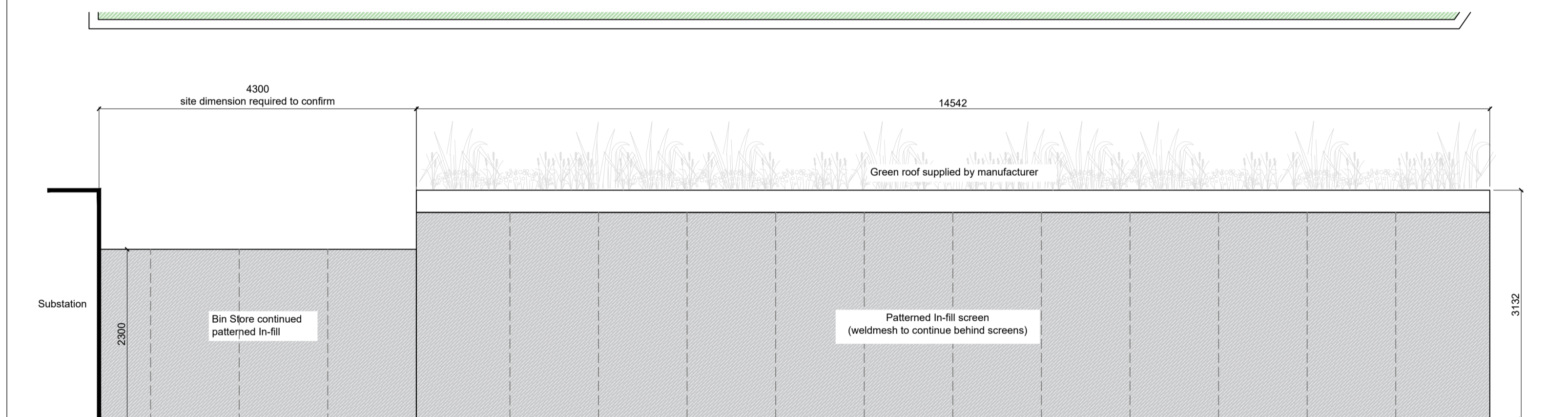
LUC LUC London
 250 Waterloo Road, London, SE1 8RD
 +44 (0)20 7383 5784
 london@lucduse.co.uk
 www.lucduse.co.uk

Project
Queen Mary University London
 School of Business and Management
 Client
 Queen Mary University London
 Scale @A1 Status
 1:200 S4
 Drawing Title
 General Arrangement Plan

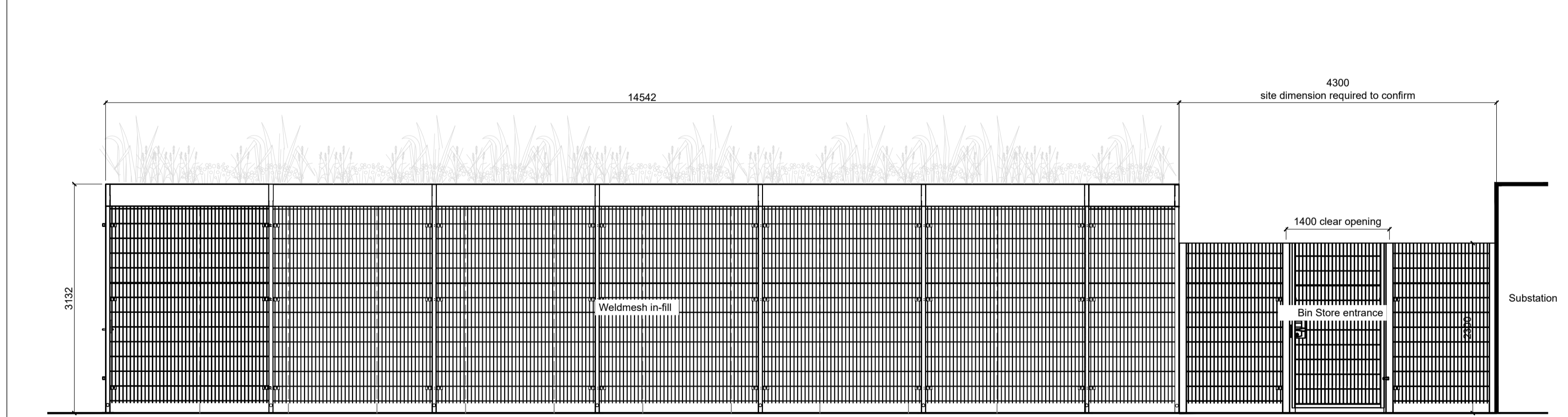
Job Nr 11749 Drawing Nr QMUL-LUC-EX-XX-DR-L-00003 Issue P07



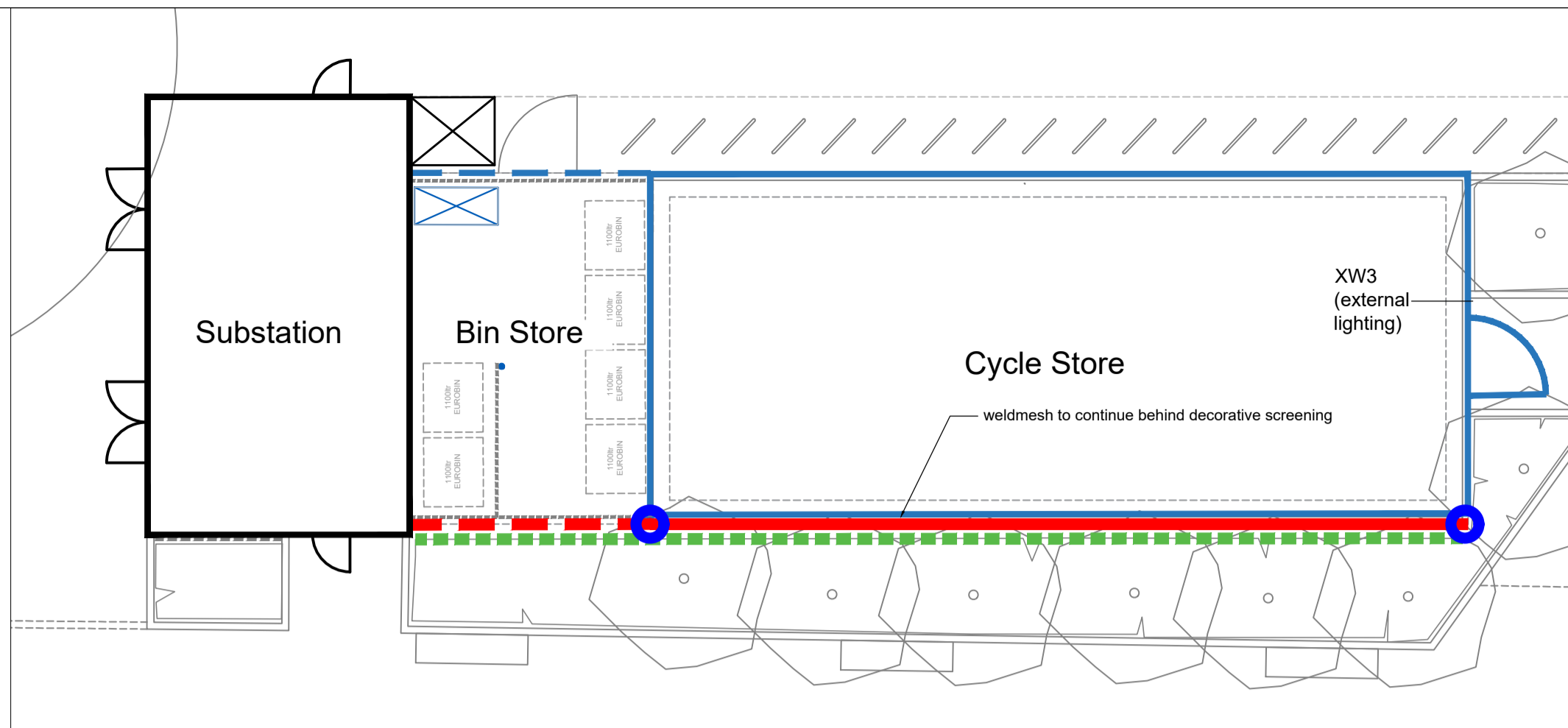
1 Plan - Cycle Store + Bin Store
Scale 1:50@A1



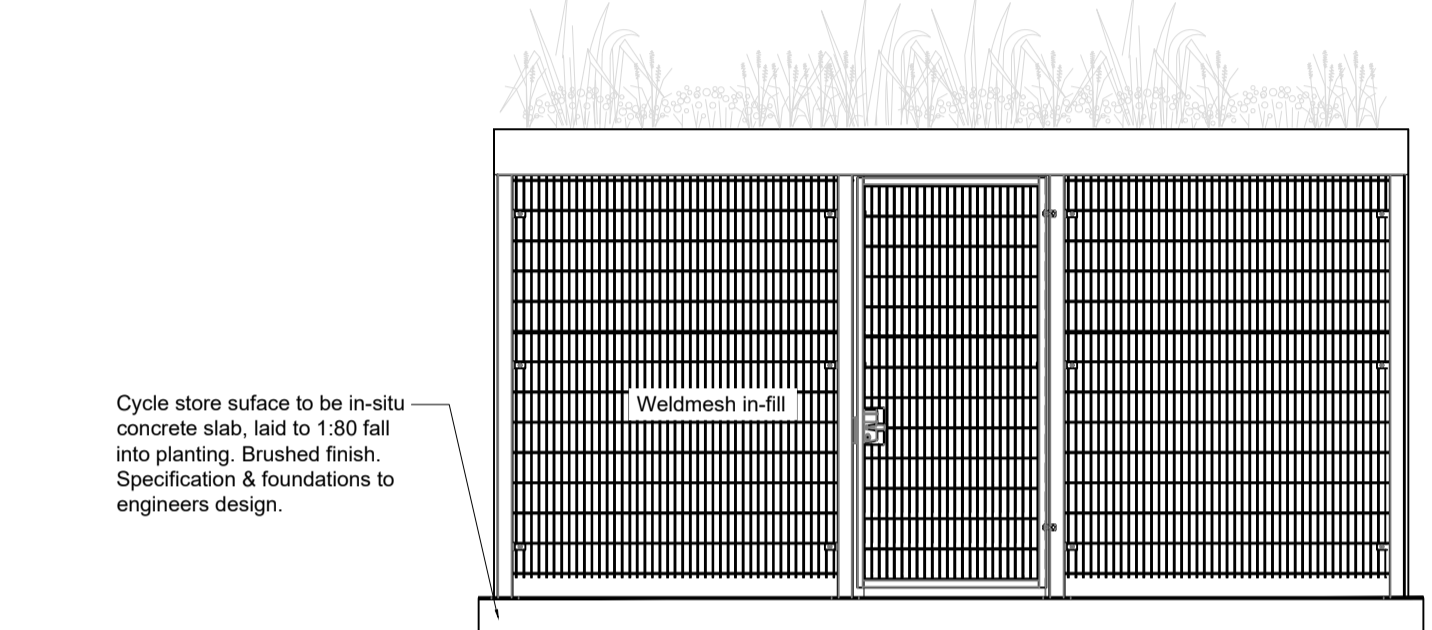
2 Elevation South - Cycle Store + Bin Store
Scale 1:50@A1



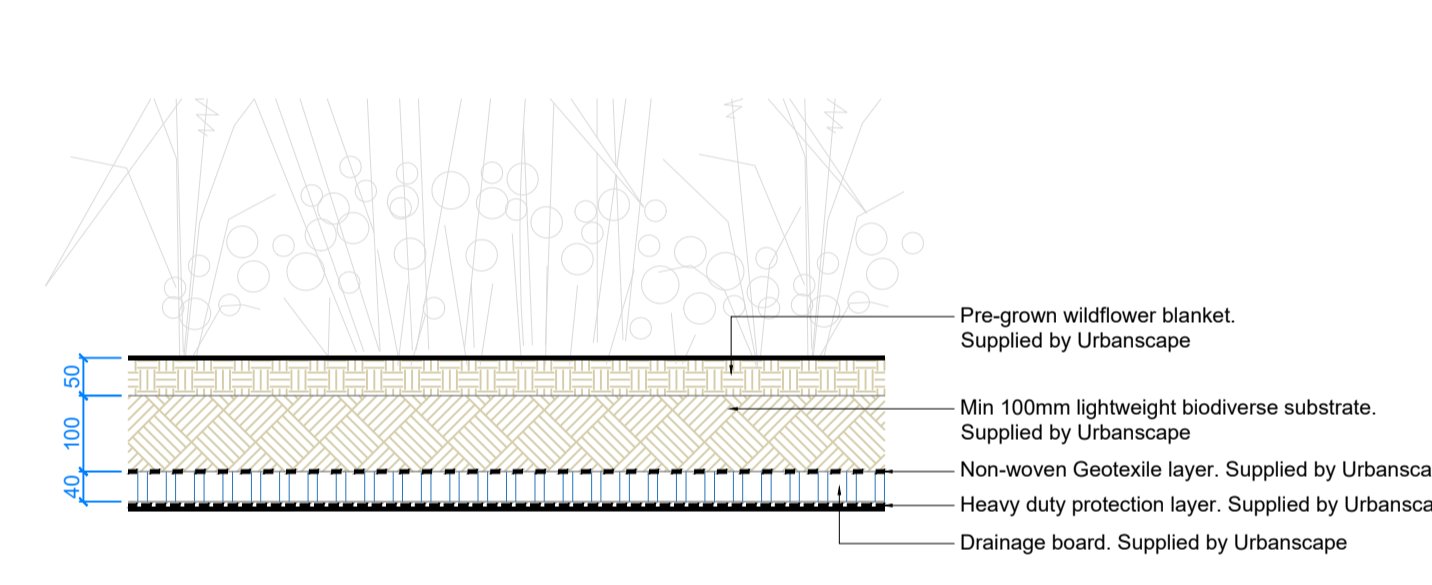
3 Elevation North - Cycle Store + Bin Store
Scale 1:50@A1



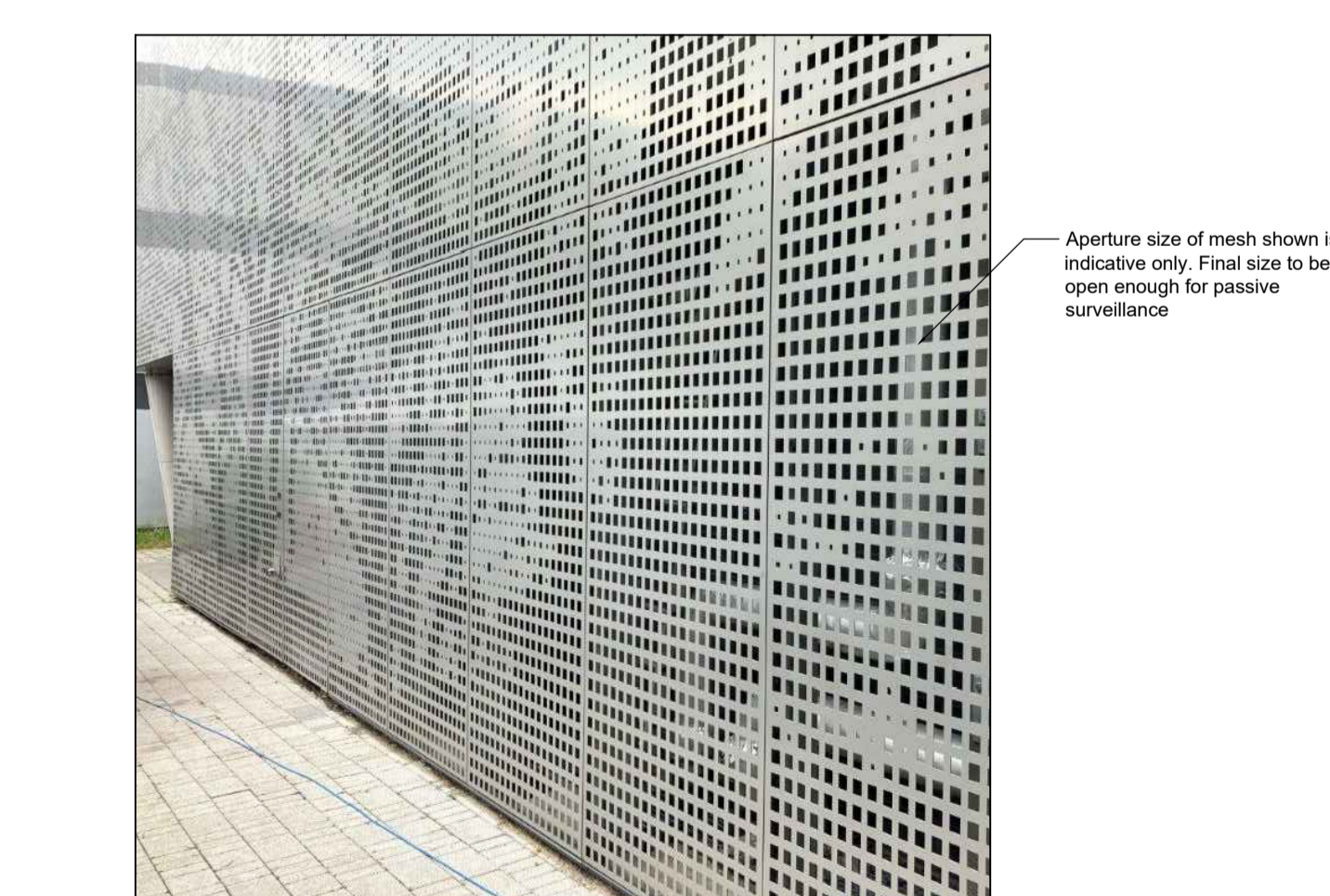
0 Plan
Scale 1:100



4 Elevation East - Cycle Store
Scale 1:50@A1



4 Green Roof - Typical Detail
Scale 1:10@A1



6 South Elevation - Patterned Infill Screen Precedent
Scale NTS



7 East and North Elevation - Weldmesh Precedent (visually permeable)
Scale NTS

Notes
Do not scale from this drawing.
All dimensions are drawn in millimetres.
Drawing & design copyright LUC.
Reproduction of this drawing in whole or in part is prohibited without prior permission.

Rev	Date	Description	By	CHK
PS1	22.01.25	Planning condition issue	JL	AM
PS2	14.06.24	Planning	JL	AM
PS3	01.03.24	Stage 6b issue - status S4	JL	AM
PS4	01.09.23	Stage 6b issue	JL	AM
PS5	25.08.23	Stage 6b preliminary issue	JL	AM
DR			DM	CHK

SPECIFICATION NOTES

- Details to be read in conjunction with landscape specification QMUL-LUC-EX-XX-SP-L-0001
- NOTE: Exact specification and construction/design to match existing Campus perforated screen detailing. Design to be reviewed against QMUL as-built details for existing screen details (with heights to vary accordingly to proposed screened element).
- For all footing details refer to engineering specifications and drawings.
- Contractor to develop metalwork design and prepare fabrication drawings for client approval prior to manufacture. All components to be measured to suit site dimensions.
- Design is assumed to be free standing of any adjacent structures, and offset appropriately (e.g. from the cycle store post & mesh) - detail to be worked up by the contractor for approval.
- All metalwork to be galvanized and polyester powder coated finish. Colour: RAL to be confirmed.
- Contractor to check and set out all dimensions and levels on site and report any abnormalities to the project manager prior to implementing the works, (to allow timely rectification of any issues).
- Access control to gates/screens to match existing Campus designs - to be worked up by the contractor.

Gate requirements

- 50 N opening force min.
- Stain posts & plates.
- Self-closer with controlled slow closing mechanism to reduce risk of finger traps
- Drop bolts (for double leaf)
- All tamper proof fixings by Serco Ryan or similar.
- Allowance for access control panel - to be confirmed with QMUL prior to commencement and procurement. Note: any access control system to have M&E Engineers input / detailing, as required.

The gate design must address the following key safety aspects:

- For (washdown and soft landscape watering)
- Allowance to be made by the contractor for a single secure external bib tap provision in each bin store, (a third external tap is to be located in the new storage room underneath the 357 canal steps - please refer to Architects plans).
- External bib tap to be lockable by QMUL
- External tap to be fixed internally to the screen panel/post design in an agreed location with QMUL grounds maintenance team.
- Exact size and specification of the tap to be confirmed with QMUL grounds maintenance team prior to commencement on-site.
- For the water feed design please refer to Civil Engineers layout and specification
- Design to follow all relevant safety/building guidelines on the safe provision of water.

External tap (within Bin Store)

- For (washdown and soft landscape watering)
- Allowance to be made by the contractor for a single secure external bib tap provision in each bin store, (a third external tap is to be located in the new storage room underneath the 357 canal steps - please refer to Architects plans).
- External bib tap to be lockable by QMUL
- External tap to be fixed internally to the screen panel/post design in an agreed location with QMUL grounds maintenance team.
- Exact size and specification of the tap to be confirmed with QMUL grounds maintenance team prior to commencement on-site.
- For the water feed design please refer to Civil Engineers layout and specification
- Design to follow all relevant safety/building guidelines on the safe provision of water.

Internal lighting

- By cycle store provider (MetroStor)

External lighting

- Wall mounted light to cycle store entrance (please refer to Buro Happold drawing and specification - reference XW3)

Patterned in-fill

- Pattern design to be based on existing screen designs on the site, (exact perforated patterning to be worked through with QMUL and the fabricator, with shop drawings prepared for sign off prior to commencement on-site)
- All metalwork to be galvanized and polyester powder coated finish. Colour: RAL to be confirmed.
- Polyester powder coated steel, colour to be confirmed, e.g. as per existing on-site

Framework

- Design to be developed by specialist fabricator/enclosure supplier (MetroStor)

Bin Store

- To form an extension of the cycle store structure (with matching screens), to be designed by specialist fabricator/enclosure supplier.
- Enclosure to be approximately 4300mm (L) x 2300mm (H). Exact extents and height/length to be confirmed with QMUL John Priestly building prior to fabrication and commencement on-site.
- Dividing panel within bin store with posts to divide up the bin store requirements (e.g. commercial waste and hazardous waste).

Internal lighting

- By cycle store provider (MetroStor)

External lighting

- Wall mounted light to cycle store entrance (please refer to Buro Happold drawing and specification - reference XW3)

LUC LUC London
250 Waterloo Road, London, SE1 8RD
+44 (0)20 7383 5784
london@landuse.co.uk
www.landuse.co.uk

Project
Queen Mary University London
School of Business and Management

Client
Queen Mary University London

Scale @A1
As shown

Status
S4

Drawing Title
Cycle Hub & Bin Store

Job Nr 11749	Drawing Nr QMUL-LUC-EX-XX-DR-L-00613	Issue P05
-----------------	---	--------------